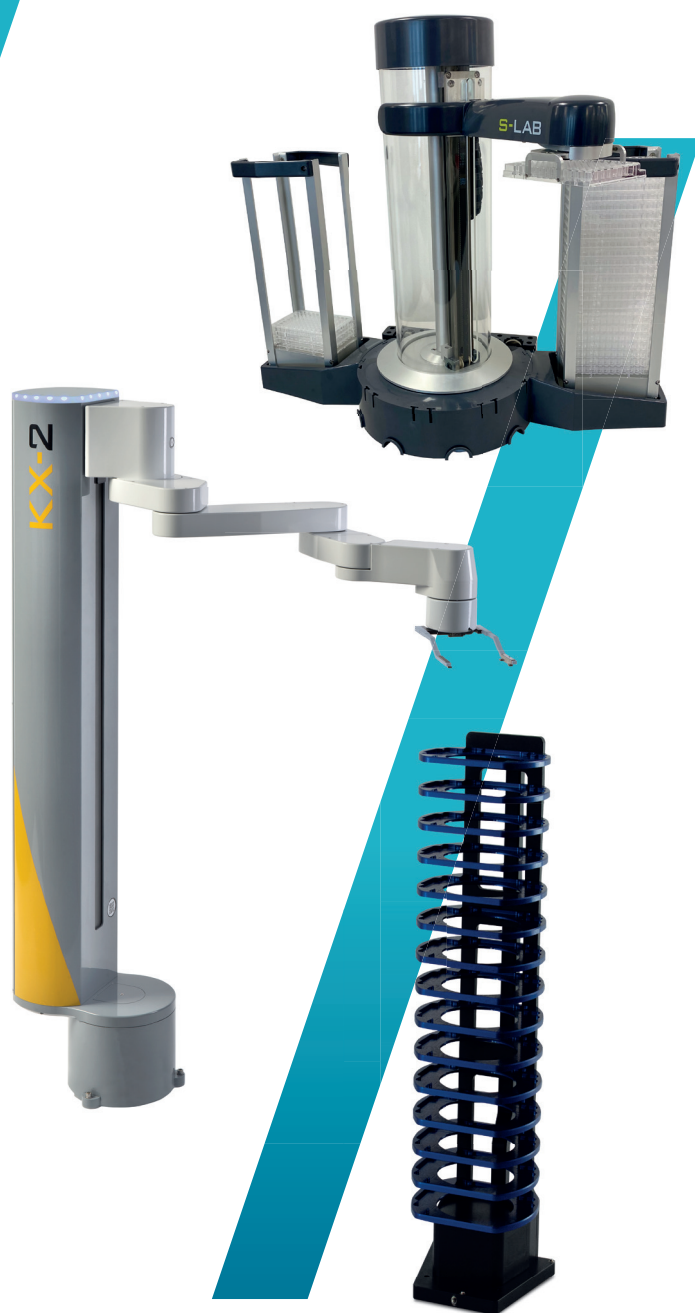


PRODUCT CATALOGUE

LABORATORY ROBOTS

AUTOMATED PLATE HANDLERS

AND ACCESSORIES



AT THE HEART
OF LABORATORY
AUTOMATION

paa-automation.com

PAA PRODUCT CATALOGUE

PAA provides customers with the tools to automate their laboratories with high quality robotics, software and automation storage and accessories. These are designed to be easily integrated with your laboratory equipment.



S-LAB

This entry level automated plate handler is simple, versatile and reliable. The S-LAB offers you improved throughput capabilities to help reduce timelines. Seamless out-of-the-box integration with the following instruments:

Hidex Sense, Tecan Hydrospeed, IntelliCyt iQue High-throughput Screener, Nexcelom Celigo, Synentec Cellavista, Molecular Devices Spectromax, Thermo Multidrop Combi, Thermo Quant Studio 7, GE IN Cell 6500



S-LAB^{PRO}

The S-LAB Pro is our enhanced automated plate handler which is used within laboratories around the world for automating a variety of applications.

Additional features include:

- Barcode reader which is compatible with standard barcode formats
- Optical plate sensor for reliable unattended operation
- x6 stack bases and 5x microplate stackers for increased walk-away automation

Contact us to discuss integration possibilities with your laboratory instruments.

info@paa-automation.com

+44 (0)1252 373 000



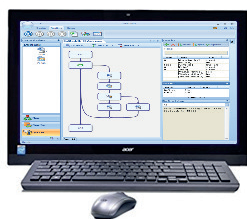
KX-2

This collaborative laboratory robot offers continuous 360 degree rotation on the shoulder and wrist axes, providing process optimisation and increased throughput. The sealed design is wipe-clean with no bug traps making it well-suited for Biosafety Level 2 applications.

Additional features include:

- Drag-to-teach technology providing easy automation of workflows
- Integrated barcode reader to reduce set-up times
- Two heights available: 500mm and 750mm
- Stops safely on human contact for work on open benches
- Best in class radial reach of 641mm
- Radial compactness of 183mm with the grippers facing inwards
- Fully enclosed working mechanism to ensure finger protection
- Fully compliant with safety standard: ISO 10218:1:2011

OPTIONAL ACCESSORIES LIST



Overlord

From the simplest of loading instruments to an enormous workcell with multiple instruments, PAA's Overlord scheduling and control software is a powerful and flexible solution.



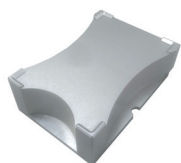
Microplate Stack

A container for a stack of typically 25 standard microplates accessible on a last in first out basis.



Stack Base

A moulded component for loading storage, rests and lidding components.



Park / Lid Park

A surface that the S-LAB uses to temporarily store one microplate or lid/de-lid.



Barcode Reader

The Barcode Reader is designed to read barcoded microplates.



Re-Grip Nest

Nests can provide an added position to complete a re-grip or de-lid sequence to enhance the versatility of the robot within the system. Also referred to as a park for a plate.



Alignment Teach Plate

The Alignment Teach Plate allows the S-LAB stacker to be set up in a consistent way.



Teach plate TCH3

A precise teaching plate that is used to teach the robot/systems various teach point positions. Can also be used to teach lid positions for de-lid and re-lid sequences.





S-LAB

S-LAB^{PRO}

KX-2



OPTIONAL ACCESSORIES LIST

| | | | | |
|---|---|-------|----------------------|------|
|  | <p>Hotel Racks</p> <p>Hotel Racks are designed to store microplates for quick, at-will retrieval to load/unload media. These come in a variety of sizes and styles.</p> | S-LAB | S-LAB ^{PRO} | KX-2 |
|  | <p>Sequential Stack Storage</p> <p>Sequential Stacks are designed to store microplates for First-In-Last-Out (FILO) retrieval. Each Sequential Stack is compatible with various Docking Station and Carousel products.</p> | | | ✓ |
|  | <p>DSU (Docking Station Universal)</p> <p>Docking Stations are engineered to repeatedly capture and release any configuration of PAA Hotel Rack or Sequential Stack. These can be connected to other DSUs using the attached DSU Bracket to increase storage potential.</p> | | | ✓ |
|  | <p>Carousel</p> <p>The Carousel is an automated rotating microplate stack or hotel base, designed for laboratory applications. This allows a large number of stacks and/or hotels to be accessed by the robot arm</p> | | | ✓ |

Whether you're looking for that simple out of the box automation solution or a full turnkey workcell, PAA has the answer.

Contact us today to discuss your requirements and let us help you find the correct laboratory solution for you.

Email us on: info@paa-automation.com or call +44 (0)1252 373000



AT THE HEART
OF LABORATORY
AUTOMATION

Peak Analysis and Automation Ltd
T: +44 (0)1252 373000

info@paa-automation.com paa-automation.com